

Oval 80[®] *v.2* & Oval 80[®] **HP** Radiant Tube Heater Specifications



Oval 80[®] *v.2* & Oval 80[®] **HP** Radiant Tube Heaters

Model Numbers	NEW Oval 80 [®] <i>v.2</i>	NEW Oval 80 [®] HP
Maximum Input (Btu/h): Single Stage	80,000	80,000
Tube Length (ft.):	20	20
Gas Supply Pressure Acceptable for the Purpose of Input Adjustment (PSIG) - Propane (max/min) - Natural Gas (max/min)	13.5/11.0 13.5/7.0	5.0 5.0
Fuel Consumption (max.): - Liquid Propane Gas (lbs./hr.) - Natural Gas (cu. ft./hr.)	3.7 80	3.7 80
Ventilation (CFM):	140	140
Spark Ignition:	Yes	Yes
Temperature Controls Available: - Individual Thermostat Control - Wired to House Environmental Control	Yes Yes	Yes Yes
Electrical Requirements (Volts / Hz / Phase):	115 / 60 / 1	115 / 60 / 1
Minimum Clearance to Combustibles (ft.): - Top - Side - Discharge End - Below Radiant Tubes	1 2.5 6 5	1 2.5 6 5
Heater Case Dimensions (in.): - Height - Width - Length	9.5 18 30	9.5 18 30
Net Weight (lbs.):	81	81
Shipping Weight (lbs.):	350*	350*
Reflector Material:	Polished Aluminum	Polished Aluminum
Tube Material: - First 10 ft. section - Balance	Aluminum Steel Steel	Aluminum Steel Steel
3/8" x 6' Gas Hose:	S	S
Hanging Hardware:	S	S
Regulator:	O	O
Piping Hardware, including gas shutoff:	O	O
Air Inlet Kit	O	O

*Shipped in sets of 4

S = Standard
O = Optional

ONLINE RESOURCES

Visit www.lbwhite.com for frequently asked questions, owners manuals, maintenance videos, and dealer login access for open orders and recent invoices.



Innovative Climate Solutions

411 Mason Street, Onalaska, WI 54650
800 345 7200 (toll free) or 608 783 5691
608 783 6115 (fax)
info@lbwhite.com | www.lbwhite.com

Your L.B. White Dealer:

CA RESIDENTS:

 **WARNING**

Cancer and reproductive harm. See www.P65Warnings.ca.gov.

© 2018 L.B. White Company
All rights reserved.
All specifications are subject
to change without notice.



NEW PRODUCT
BETTER DESIGN

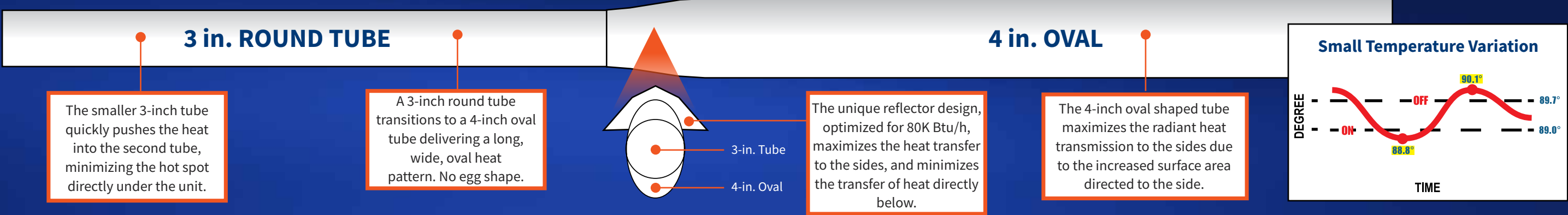


800-345-7200 / 608-783-5691
www.lbwhite.com

Oval 80[®] v.2 & Oval 80[®] **HP** Radiant Poultry Heaters

See what's NEW & IMPROVED!

All the Great Features of the Original Model!

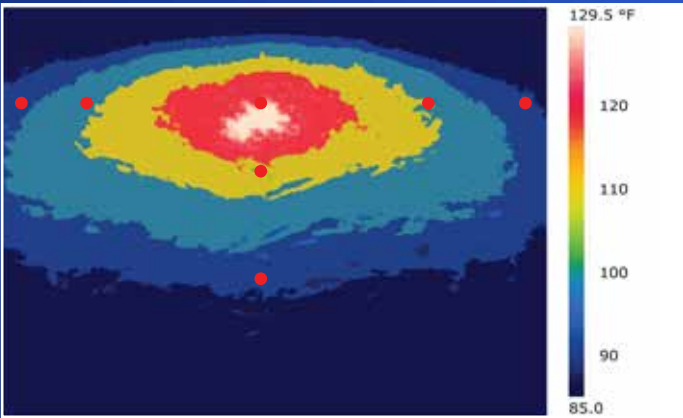


Still Easy to Install!

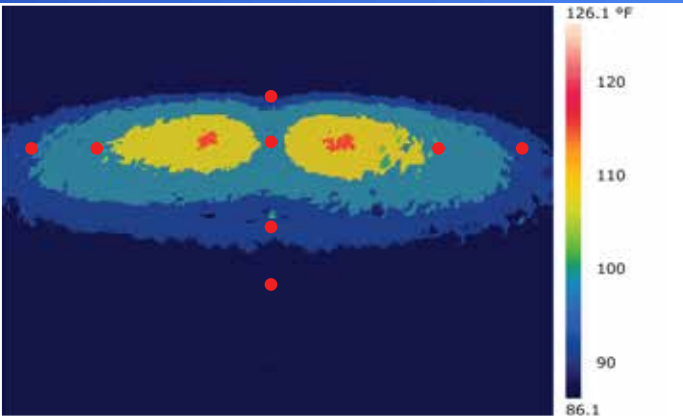
Oval 80 v.2 & HP radiant heaters are 100% test fired at the factory and come with all the components you need for easy installation.



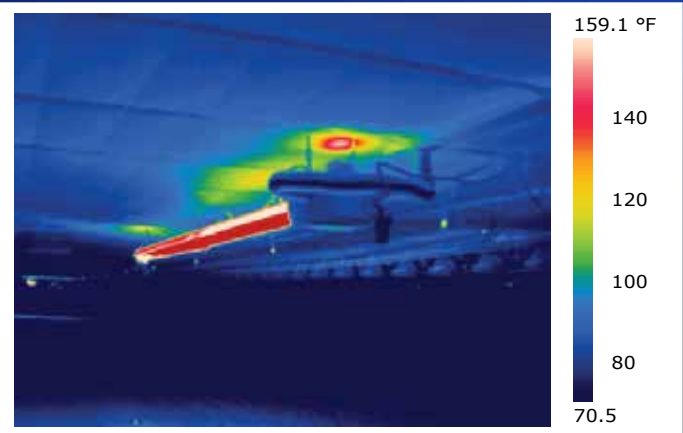
Still More Heat to the Floor / Cooler Ceiling Temperature



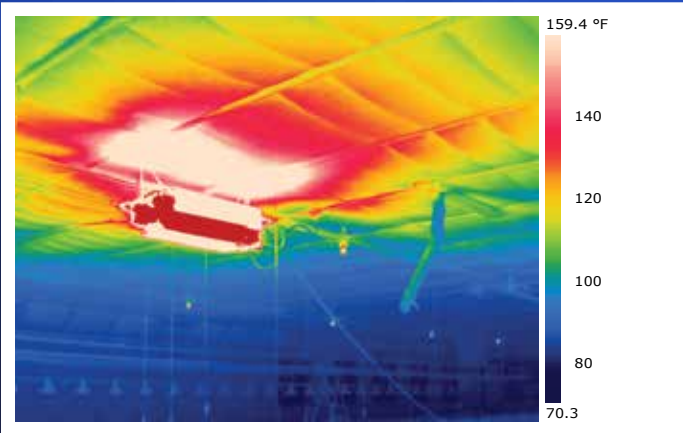
Oval 80s have longer, oval heat pattern.



Competitive Unit



Oval 80s' ceiling temperatures = 133°F. No need for insulation board above heater.



Competitive Ceiling Temperature (Max.) = 190.6°F.

Now Easier to Use and Maintain!



Gas valve with higher durability



Easier access service panel for gas control valve



Easier-to-remove components



Brighter, easier-to-see indicator lights



More secure latching system



New valve mounting bracket



Air inlet relocated to follow heater tubes



Removable motor mount panel



Rotated fan housing for easier reach



New air outlet duct

Application - Example Heater Placement

